



**SAVE
BURNET**

PRESENTED BY SAVEBURNET

PROTECTING BURNET'S AIR

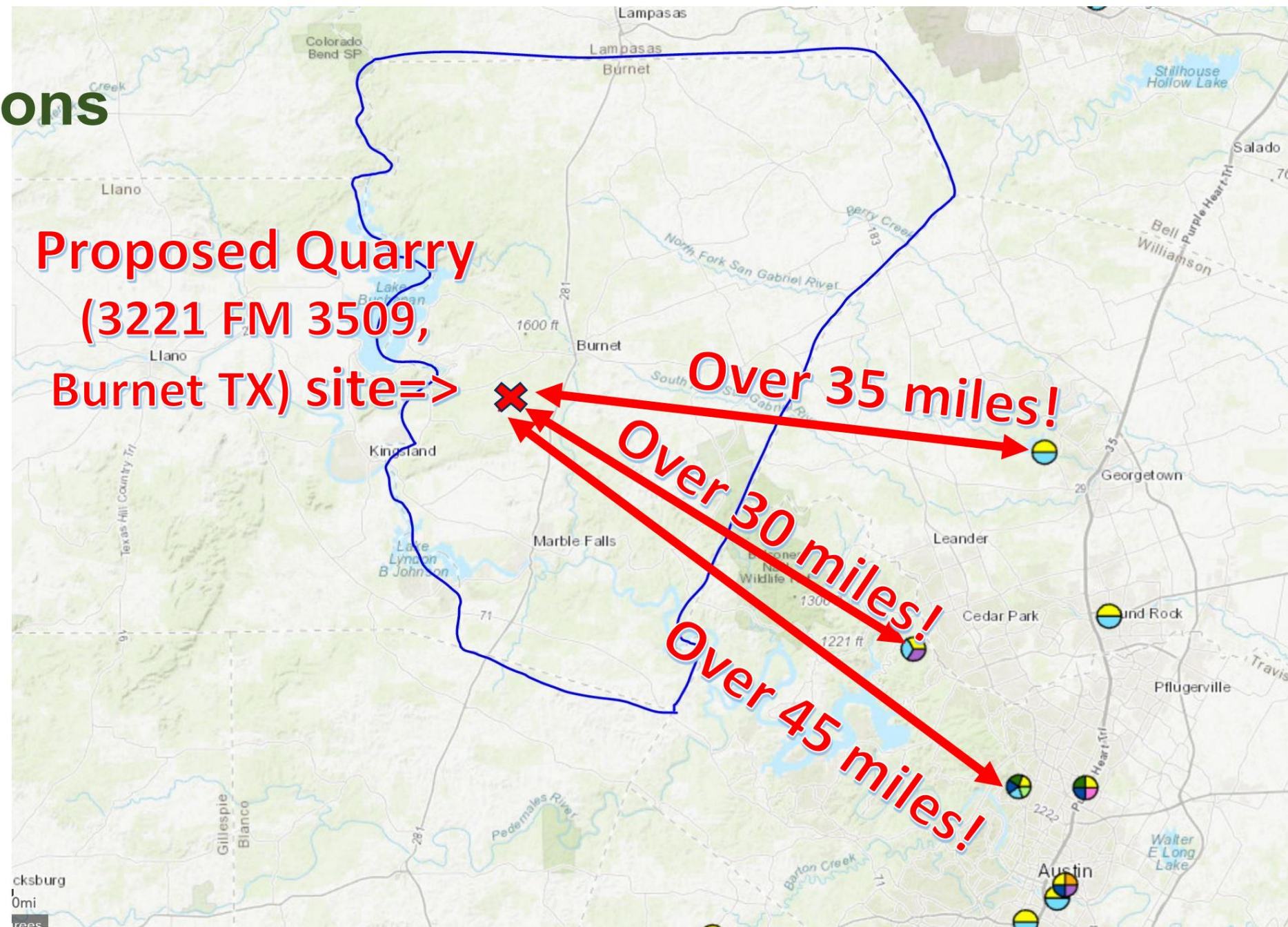
WWW.SAVEBURNET.COM

Update on Air Monitoring performed surrounding
the proposed Rock Crushing plant on Hoover Valley
Road.

Summary of information presented Jan of 2025

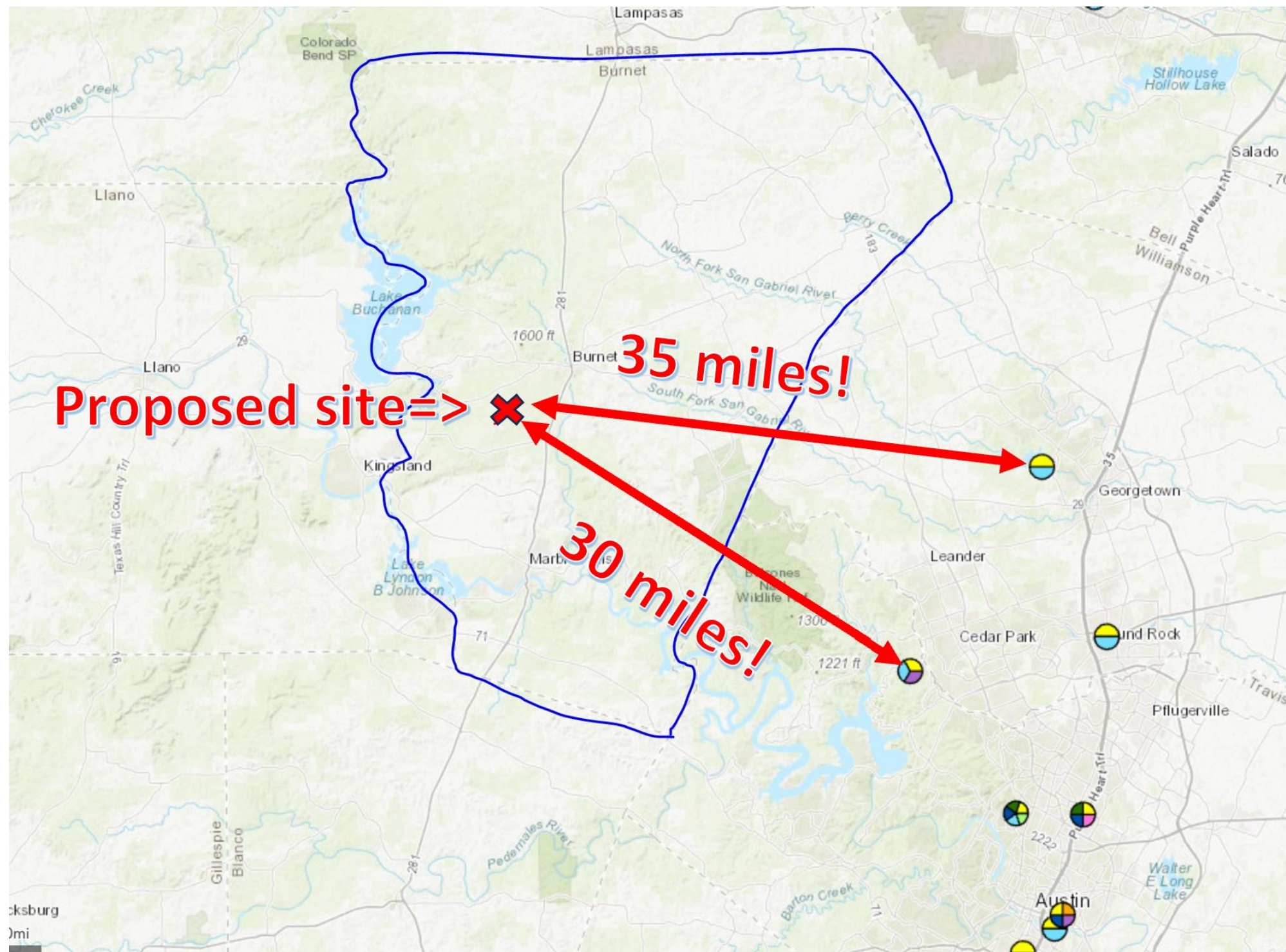
TCEQ air monitoring locations

- There are over 15 Rock Quarries in Burnet county, yet there are NO air Quality monitors in Burnet County!
- Closest Air Monitoring stations is upwind and miles away
- Audubon society in Leander, Texas is over 30 miles from proposed Rock Crushing Site. This site has not had validated data since September of 2024.
- Corp of Engineers at Lake Georgetown, Texas is over 35 miles away from proposed Rock Crushing site, and it only measures Temperature, Ozone and wind.... Not Particular Matter (PM or dust).
- Closest air monitoring station that is active is located at 3824 North Hills Drive, Austin Texas. Over 45 miles away and upwind from proposed site.



- **Over 15 APO's / Quarries in Burnet County**
- **TCEQ has NO Air Quality Monitors in Burnet county**
- **Closest TCEQ Air Quality monitor is 45 miles up wind!**

Information as of Jan of 2026!



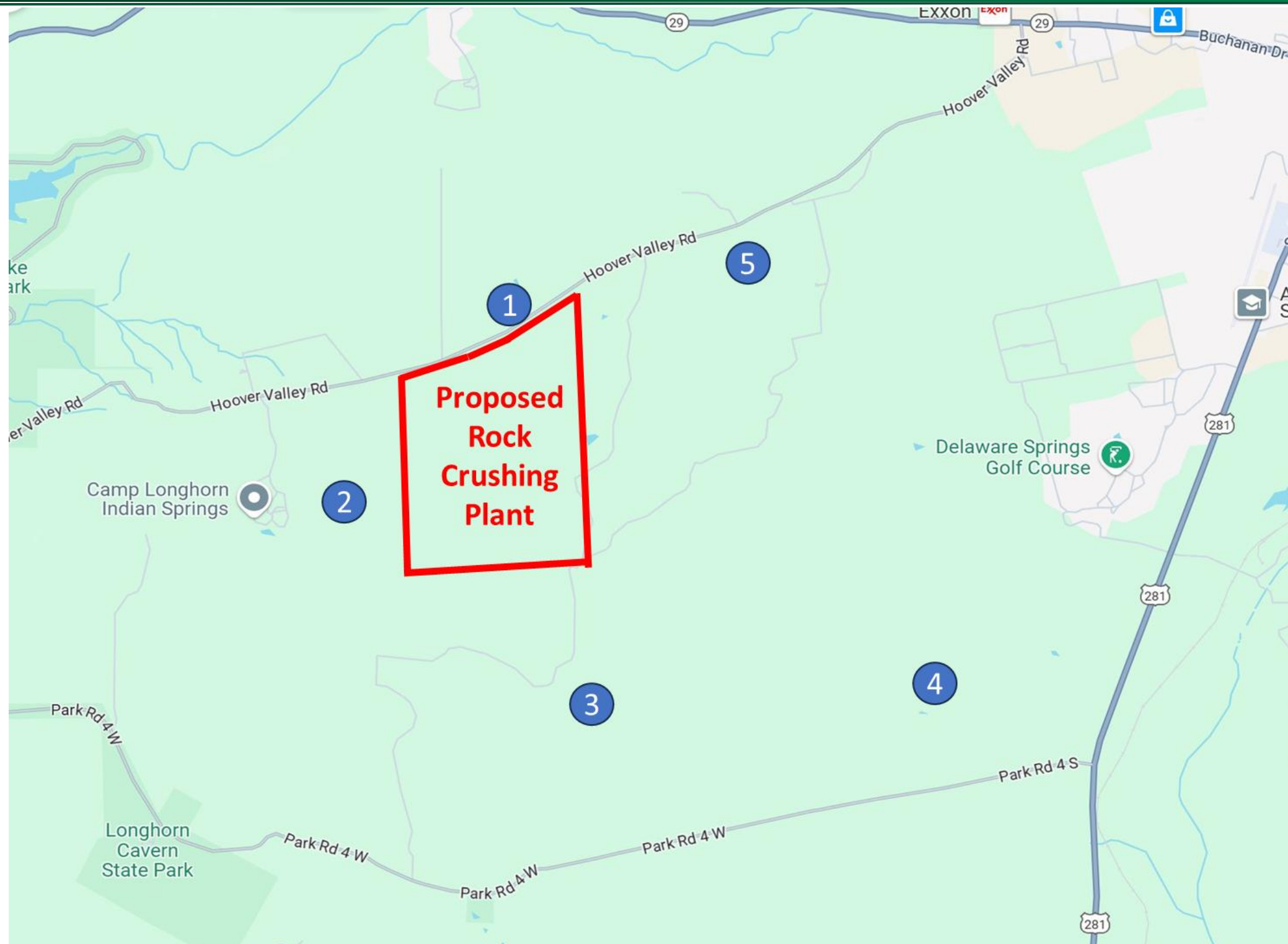
- **Over 17 APO's / Quarries in Burnet County**
- **TCEQ still has NO Air Quality Monitors in Burnet county!**
- **Closest TCEQ Air Quality monitor is now 30 miles up wind!**

THE SaveBurnet.com Air Monitor System

Our Air Monitors.

- First one installed back in Jan of 2025
- 5 Air Monitors strategically installed around the proposed rock crushing location.
- Roughly 1-Year of air quality data to establish and document a baseline for the greater Burnet area.
- All data is open to the public to view and download.

SaveBurnet.com Air Monitor Locations



- **All 5 monitors surround the proposed site, allowing baseline reading regardless of wind direction.**
- **Realtime data is available online via the SaveBurnet.com website**
- **In addition to US EPA PM2.5 Air Quality measurements, Wind speed and direction are also being tracked via the Windy.com app**

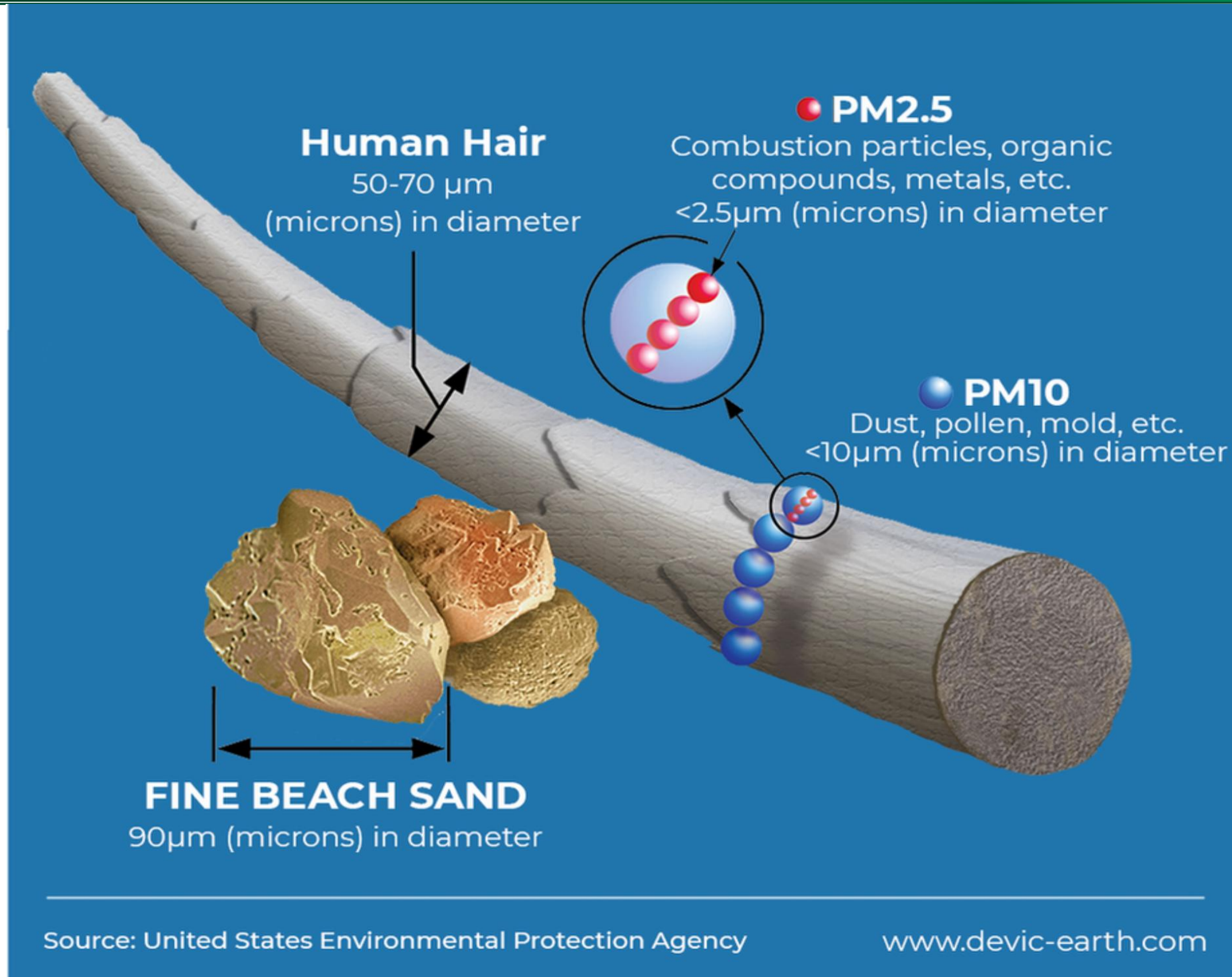
What do the US EPA 2.5PM readings mean?

The EPA PM_{2.5} chart uses a color-coded Air Quality Index (AQI) from 0 to 500+ to indicate the concentration of fine, inhalable particles ($\leq 2.5\mu m$) and associated health risks. It ranges from "Good" (Green, 0–50) to "Hazardous" (Maroon, >300), with a 24-hour concentration above $55 \mu g/m^3$ considered "Unhealthy for Sensitive Groups".

Measurement Units & Standards:

- $\mu g/m^3$: Concentrations are measured in micrograms per cubic meter.
- **Annual Standard:** As of Feb 2024, the EPA strengthened the annual, health-based standard to $9.0 \mu g/m^3$
- **Health Impact:** PM_{2.5} can penetrate deep into lungs and enter the bloodstream, with a $10 \mu g/m^3$ increase in concentration raising heart disease death risk by 10%.

Size of the dust particales being measured



The SaveBurnet.com air monitors measure both PM2.5 and PM10 dust particles

How does the dust particulates effect the body

EFFECTS OF AIR POLLUTION ON HUMAN BODY



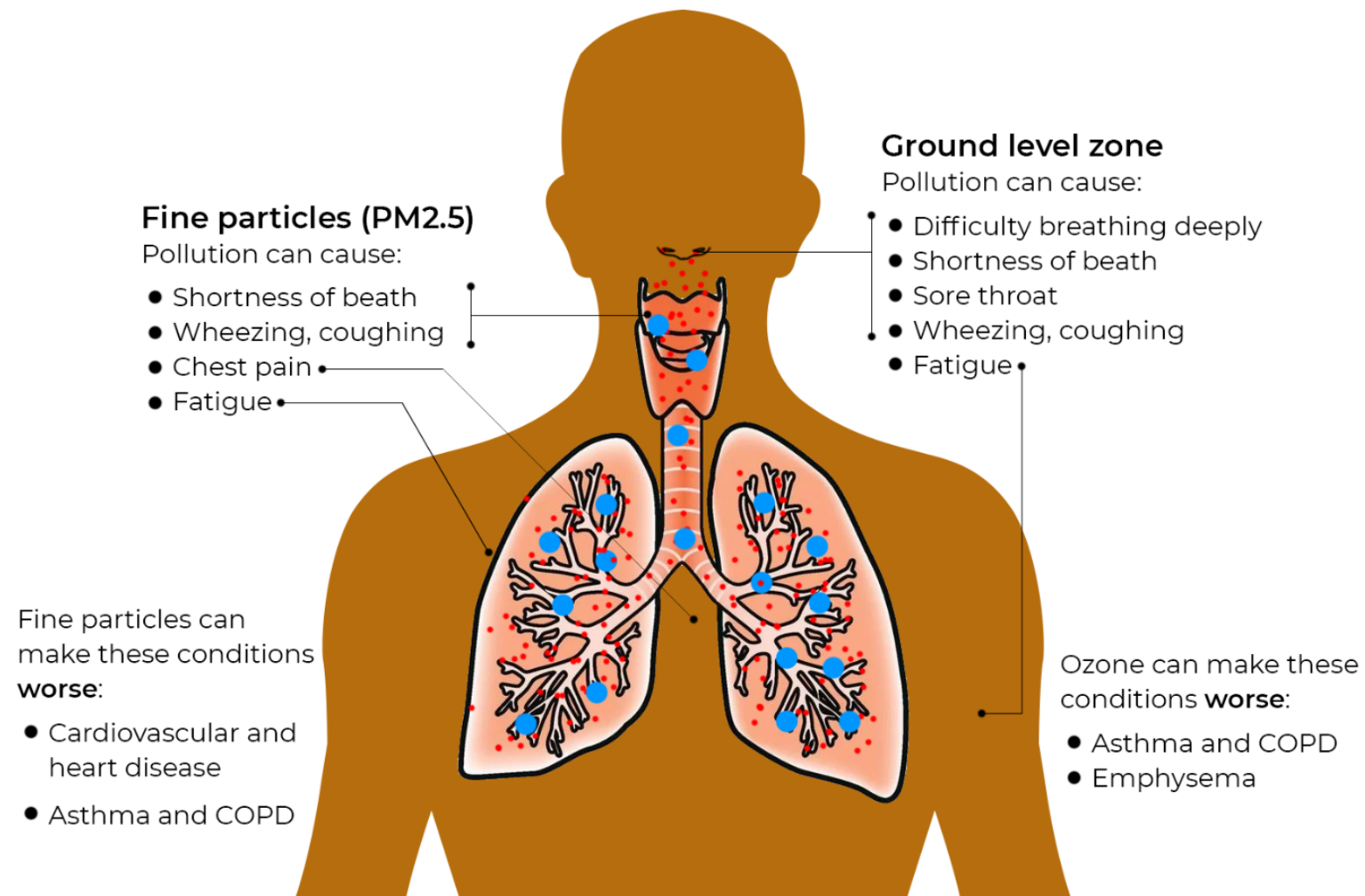
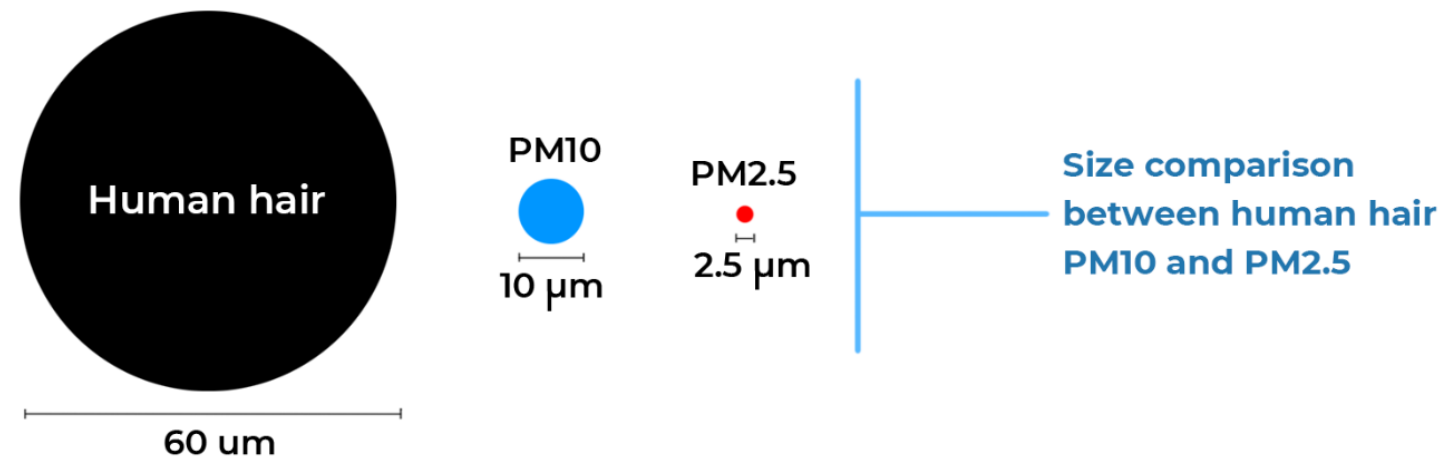
Particulate matter can cause serious disruption to the lungs by damaging their outer layer. This makes the lungs far more sensitive and vulnerable to damage, increasing the severity of diseases such as COVID.

Research in epidemiology shows that cities with particularly high levels of PM emissions show common recurrences of respiratory problems and associated health risks.

Further, PM2.5 vs PM10, both can also get into the bloodstream and pose severe health risks such as asthma, bronchitis and heart disease, in addition to short-term problems like lung and nose irritation, wheezing, irritation of eyes, etc.

If the body is constantly exposed to particulate matter, these conditions could accelerate in severity and lead to other chronic problems. Additionally, they magnify the severity of existing health problems.

Exposure to high levels of particulate matter can even lead to anemia in children.



US EPA 2.5PM Color Code Chart

Air Quality Index (AQI)		PM _{2.5} Concentration (µg/m ³)	Description
<i>The air quality is:</i>	<i>...when the AQI is:</i>	<i>...and the PM_{2.5} concentration is:</i>	<i>...we can understand that:</i>
Good	0 - 50	0 - 9	Air quality is satisfactory, and air pollution poses little to no risk.
Moderate	51 - 100	9 - 35	Air quality is acceptable. However, there may be a risk for some people, particularly those who are unusually sensitive to air pollution.
Unhealthy for Sensitive Groups	101 - 150	35 - 55	Members of sensitive groups may experience health effects. The general public is less likely to be affected.
Unhealthy	151 - 200	55 - 125	Some members of the general public may experience health effects; members of sensitive groups may experience more serious health effects.
Very Unhealthy	200 - 300	125 - 225	Health alert: The risk of health effects is increased for everyone.
Hazardous	300+	225+	Health warning of emergency conditions: Everyone is more likely to be affected.

What do the US EPA 2.5PM readings mean?

Key EPA PM2.5 AQI Categories (24-hour average):

- Green (Good, 0–50): Air quality is satisfactory; little to no risk.
- Yellow (Moderate, 51–100): Acceptable, but sensitive individuals should limit prolonged outdoor exertion.
- Orange (Unhealthy for Sensitive Groups, 101–150): Sensitive groups (people with heart/lung disease, children, older adults) should limit prolonged outdoor exertion.
- Red (Unhealthy, 151–200): Everyone may begin to experience health effects; sensitive groups should avoid prolonged outdoor exertion.
- Purple (Very Unhealthy, 201–300): Health alert; everyone is more likely to experience serious health effects.
- Maroon (Hazardous, 301+): Health warning of emergency conditions; the entire population is likely to be affected.

2025 data for the 5 active air monitors

Air Quality Monitors around the proposed quarry



Yearly average is "Good" or in the green at 41.5

	Jan-25	Feb-25	Mar-25	Apr-25	May-25	Jun-25	Jul-25	Aug-25	Sep-25	Oct-25	Nov-25	Dec-25
North of Quarry	37.5	56.0	30.5	52.0	54.5	32.0	32.5	40.5	50.5	36.5	28.5	41.5
West of Quarry			42.0	50.5	52.0	30.5	37.5	41.0	41.0	32.0	27.0	37.5
South of Quarry			31.0	52.5	54.5	32.5	36.5	41.5	52.5	40.0	29.5	42.5
East of Quarry			25.0	53.5	55.0	33.0	36.0	40.0	50.5	36.0	30.0	41.0
2 miles SE of Quarry				47.5	53.5	35.0	38.5	41.5	52.0	37.0	30.5	45.0
Yearly Avg.	41.5	41.5	41.5	41.5	41.5	41.5	41.5	41.5	41.5	41.5	41.5	41.5

Supporting Data that affects air quality readings

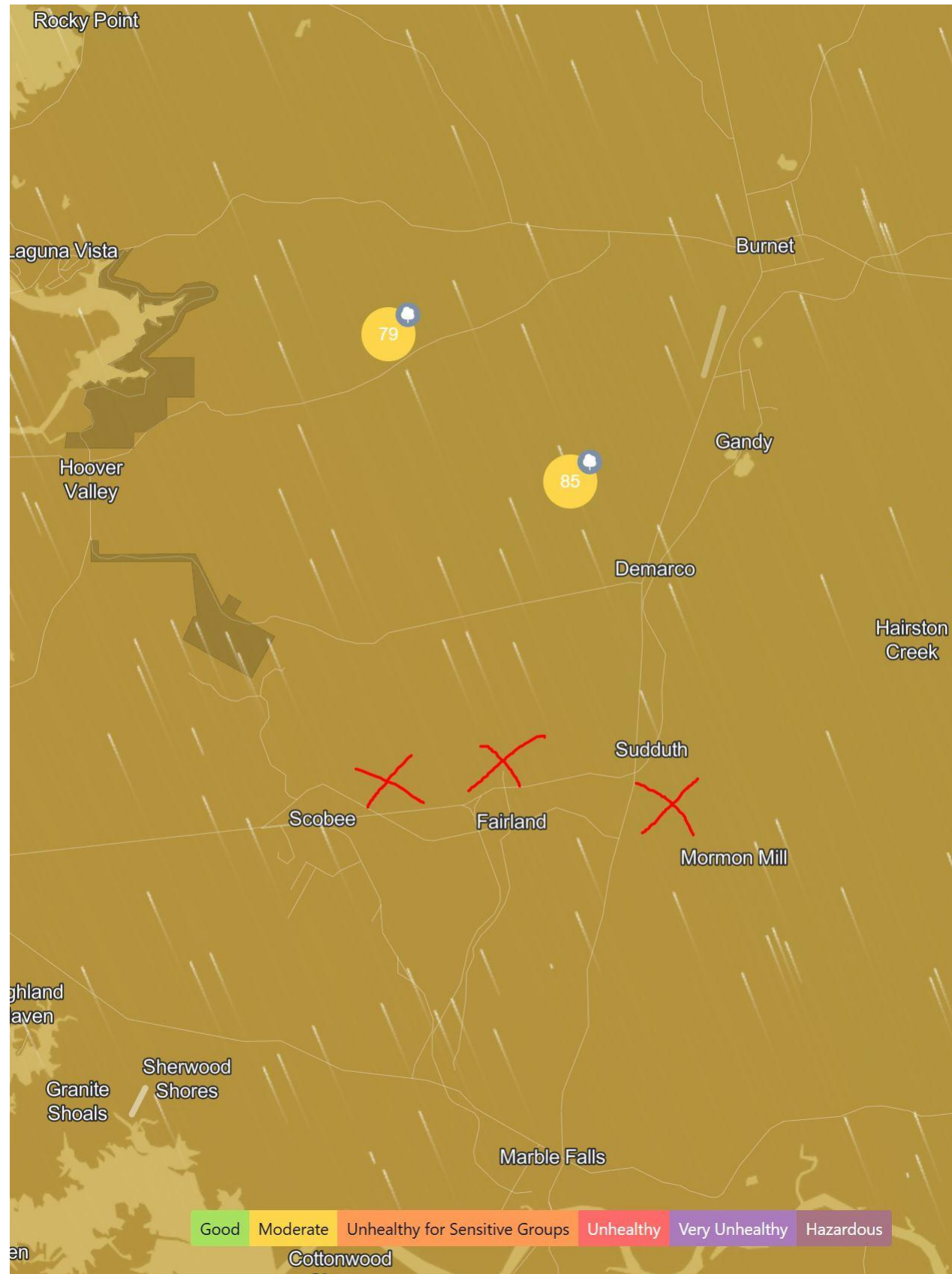
- **Amount of Local Rain**
- **Wind Speed & Direction**
- **Temperature & Humidity**
- **Natural and Man Made events**

Local amounts of Rain in 2025 (sample of Data collected)

Week	Dates	Rain (Inches)
1	Jan 1 – Jan 7	0.18"
2	Jan 8 – Jan 14	0.00"
3	Jan 15 – Jan 21	0.30"
4	Jan 22 – Jan 28	0.44"
5	Jan 29 – Feb 4	0.05"
6	Feb 5 – Feb 11	0.00"
7	Feb 12 – Feb 18	0.61"
8	Feb 19 – Feb 25	0.00"
9	Feb 26 – Mar 4	0.40"
10	Mar 5 – Mar 11	0.95"
11	Mar 12 – Mar 18	0.12"
12	Mar 19 – Mar 25	0.25"
13	Mar 26 – Apr 1	0.32"
14	Apr 2 – Apr 8	0.91"
15	Apr 9 – Apr 15	0.00"
16	Apr 16 – Apr 22	0.58"
17	Apr 23 – Apr 29	1.32"
18	Apr 30 – May 6	1.48"
19	May 7 – May 13	0.04"
20	May 14 – May 20	0.86"
21	May 21 – May 27	2.65"
22	May 28 – Jun 3	1.11"
23	Jun 4 – Jun 10	1.11"
24	Jun 11 – Jun 17	1.93"
25	Jun 18 – Jun 24	0.00"

Week	Dates	Rain (Inches)
26	Jun 25 – Jul 1	0.43"
27	Jul 2 – Jul 8	12.45"
28	Jul 9 – Jul 15	1.20"
29	Jul 16 – Jul 22	0.00"
30	Jul 23 – Jul 29	0.00"
31	Jul 30 – Aug 5	0.00"
32	Aug 6 – Aug 12	0.00"
33	Aug 13 – Aug 19	0.07"
34	Aug 20 – Aug 26	0.33"
35	Aug 27 – Sep 2	0.45"
36	Sep 3 – Sep 9	0.00"
37	Sep 10 – Sep 16	0.24"
38	Sep 17 – Sep 23	1.01"
39	Sep 24 – Sep 30	0.78"
40	Oct 1 – Oct 7	1.25"
41	Oct 8 – Oct 14	0.00"
42	Oct 15 – Oct 21	0.48"
43	Oct 22 – Oct 28	0.94"
44	Oct 29 – Nov 4	0.00"
45	Nov 5 – Nov 11	0.00"
46	Nov 12 – Nov 18	0.12"
47	Nov 19 – Nov 25	1.81"
48	Nov 26 – Dec 2	0.00"
49	Dec 3 – Dec 9	0.00"
50	Dec 10 – Dec 16	0.31"
51	Dec 17 – Dec 23	0.10"
52	Dec 24 – Dec 31	0.00"

Wind Speed, Direction, Temperature and Humidity



Below is a typical summer day for Marble Falls quarries



Map on the left shows dust from the Marble Falls quarries effecting air quality in greater Burnet area

Natural and Man Made Events

The SaveBurnet.com team also documents and records and adjusts readings for anomalies that can effect the air quality readings:

- Fires detected and logged via IQAir maps
- Activity when local burn bans are lifted
- Dense fog
- Calibration and maintenance of air monitors
- Saharan dust flow (typically June – August)

What Happens When certain conditions Align? Burnet's Air Quality goes from **Green** to: **Yellow** or **Orange**!

SaveBurnet.com has documented numerous incidents where Burnet's Air Quality has when from "**Green**" to "**Yellow**" or "**Orange**" when the follow items occur:

- Temperatures are above 80 degrees
- Humidity is 50% or lower
- There has been no rain for 5 or more consecutive days
- The wind is blowing to the Northeast (blowing out of the Southwest)

Burnet's Air Quality goes from **Green** to: **Yellow** or **Orange**!

Why does the wind direction matter & How does it affect Burnet's Air Quality?

- Dust from the Quarries in Marble Falls easily travels the 7-10 miles to the Greater Burnet area.
- With just a shift in the wind direction (to the Northeast) degrades the SaveBurnet.com Air Monitor readings by 7 to 16 points on the US EPA 2.5PM scale
- This is one of the main contributors that makes the air readings go into the:
 - **Moderate** = Risk for some that are sensitive to air pollution.
 - **Unhealth for sensitive groups** = May experience health effects.
- If the **proposed FM 3509** (Hoover Valley Rd) is allowed to become operational... Burnet's Air Quality will only get worse

A PLACE WORTH PROTECTING

The Greater Burnet Area is a rare place:

Longhorn Cavern State park

Inks Dam National Fish
Hatchery

A historic scenic corridor

Inks Lake State park

Local Families who support
the community

Camp Longhorn

THERE IS NOTHING ELSE LIKE THIS IN TEXAS – AND ONCE IT IS GONE, IT'S GONE FOR GOOD

A PLACE WORTH PROTECTING

The Greater Burnet Area is worth protecting. There is:

**Only one Inks Lake.
Only one Longhorn Cavern.
Only one Camp Longhorn.
Only one Hoover Valley**

**Please support our cause, visit
SaveBurnet.com's website:**

- **Sign up for our updates**
- **Donate to our cause**



**SAVE
BURNET**

WWW.SAVEBURNET.COM

THANK YOU

**THANK YOU FOR LISTENING.
THANK YOU FOR CARING.
THANK YOU FOR LEADING.**

Let's protect Burnet's Air, water and Land.